

GP Masterclass

Children's Social Care

Brunel University
2nd March 2011



HILLINGDON
LONDON

Paul Hewitt

Service Manager

Safeguarding Children & Quality Assurance

London Borough Hillingdon



HILLINGDON
LONDON

This Presentation will cover :

- Legislation and National Guidance relating to Child Safeguarding
- National and local trends, life after Baby
- The Hillingdon Context
- The scope of work done by Children's Social Care
- The governance and structure of Child Safeguarding in Hillingdon
- Key messages for GPs



HILLINGDON
LONDON

Safeguarding Children

The legislative framework:

- Children Act 1989
- Children Act 2004
- The Children & Young Persons Act 2008
- NICE Clinical Guidelines 2009
- Working Together 2010
- London Child Protection Procedures 2010



HILLINGDON
LONDON

Child Protection Awareness

- 1960s Kempe (US) Battered baby syndrome.
- 1970s Sexual Abuse
- 1980s Organised abuse
- 1990s Sexual abuse by females more recognised
- 2000s Victoria Climbié (Laming Report)
- 2008 Baby Peter Connelly (Haringey)
- 2010 Vanessa George (Plymouth Nursery)
- 2011 Munro Review (ongoing)



Finding from Baby Peter

- Insufficient strategic leadership
- Non-compliance with Climbié recommendations.
- LSCB insufficient challenge, independent chair
- Insufficient communication, joint assessment and planning.
- Assessment fail to identify those at risk of immediate harm.



Finding from Baby Peter - all agencies

- Front line practice all agencies inconsistent / not effectively monitored by line managers.
- Child protection plans generally poor.
- Standard of record keeping inconsistent, often poor.
- Too reliant on quantitative data



The Munro report

- Commissioned by the Coalition Govt to recommend ways of reforming the child protection system.
- Final Report due Summer 2011
- Interim report published January 2011



HILLINGDON
LONDON

Munro Review - continued

The areas for reform include :

- Management and inspection process
- Developing social work expertise
- Easier access to social work advice
- Reducing prescription and bureaucracy



HILLINGDON
LONDON

National Context

11 million children in England.

- 200,000 live with domestic abuse and violence
- 375,900 'children in need' to LAs
- 64,400 looked after by a local authority
- 37,000 subject of a care order
- 39,100 subject of a Child Protection Plan
- 1,300 privately fostered

- <http://www.education.gov.uk/rsgateway/DB/SFR/s000960/index.sh>



National Picture on Serious Case Reviews

In "2008 overview analysis reported 161 (2/3rd deaths) SCR's carried out during 2003/05.

- 47% of the children were aged under 1.
- 12% of children named on the child protection plans
- 55% of children were known to children's social care
- very young children (physically assaulted) in contact with universal services / adult services rather than children's social care.



National Picture on Serious Case Reviews (2)

- long term neglect- *'start again syndrome'*.
- well over half of the children had been living with domestic violence, or parental mental ill health, or parental substance misuse. These three problems often co-existed.



Hillingdon Context

Changing Hillingdon: Population 0-19s

- Expected to rise: 67,608 (2010), 75,494 (2020), 81,201 (2030)
- Insufficient school and children centre places
- Ethnic minority groups to increase (ethnicity closely linked to health status, outcomes and inequalities.)



Hillingdon Context

Community Health Activity

- Patient contact increased 20% 2007/08 - 2009/10.
- HCH has seen increased demand for all services, increased referrals (esp disabilities)
- Predicted demand will continue to rise with the increasing birth rate and as more babies with complex needs survive.



Hillingdon Context

Other health outcomes

- Relatively high levels of Alcohol Specific Hospital Admission < 18s (6th worst in London).
- Mental Health: potentially higher numbers of vulnerable children (5-15 years)
- Children with certain of mental health problems / disorder not accessing mental health services.



Hillingdon Social Care Context

- Referrals:

2007-2008	2148
2008-2009	1939
2009-2010	2456
2010-2011	2296 [31/12/2010]
- 233 children subject to a child protection plan [130 in April 2008]
- Post Baby Peter: significant national rise in referrals, children subject to CP process, Court proceedings, being looked after
- In Hillingdon; significant strain on front line



Inspection and External Audit

- Annual [Ofsted] Unannounced Inspection
[January 2011 Hillingdon deemed to be Good]
- Announced [Ofsted] Inspection [3 year cycle]
[October 2009 Hillingdon deemed to be Good with some outstanding features]
- Comprehensive Area Assessment [CAA]
- Audit commission
[December 2009 Hillingdon Awarded a Green Flag for outstanding services for child trafficking and safeguarding unaccompanied asylum seeking children]



Abuse and Neglect

- Forms of maltreatment of a child
- Inflicting harm, or by failing to prevent harm.
- In a family or an institutional or community setting; by those known to them; *or* (more rarely) by a stranger.
- By an adult or adults or another child or children.



Significant Harm

- HARM ill-treatment or the impairment of health or development, including for example, impairment suffered from seeing or hearing the ill-treatment of another;
- DEVELOPMENT means physical, intellectual, emotional, social or behavioural
- HEALTH means physical or mental health; and
- ILL TREATMENT includes sexual abuse and forms of ill-treatment which are not physical.

- Children Act 1989 S.31(9), updated by the Adoption and Children Act 2002 (S.120)



HILLINGDON
LONDON

Significant Harm ..Continued

- No absolute criteria
- Degree and extent of physical harm
- Duration and frequency of abuse & neglect
- Extent of premeditation
- Degree of threat, coercion, sadism, etc.
- Number of events that damage physical and/or psychological development
- Family and social circumstances



Categories of Abuse

[Within the Family]

- **Physical abuse**
e.g. Fixed parental beliefs in physical chastisement
- **Emotional abuse**
E.G. Children exposed to persistent parental domestic violence
- **Sexual abuse**
male and female children as victims, male and female adults as perpetrators
- **Neglect**
Children neglected by parents experiencing depression or (mental illness) or misusing substances

(Working Together 2010)



HILLINGDON
LONDON

Other Types of Child Abuse [Outside the Family]

- **Child Trafficking**

Domestic servitude, Benefit Fraud, Labour exploitation

- **Sexual Exploitation**

Derby case -street grooming child prostitution

- **Internet Abuse**

e.g. "sexting" & grooming through social networking sites

- **Children Missing from home or care**

Involvement with crime and gangs



Responsibility of professionals

- Professional bodies stipulate need to protect children over adult's rights to privacy
- Government requirement that all professionals should safeguard children
 - “Child Safeguarding is everyone's business” —Lord Laming.
- Main responsibility: to share information appropriately, ensure concerns are properly followed up.



Information Sharing

- If you have reasonable cause_ - consider referring
- Do not ignore concerns - talk to someone. Protect identity where possible until you have reasonable cause
- Abuse does not need to be deliberate or neglectful, e.g. refusal to consent for further treatment



Why Refer?

- Children's rights to safety
- Adults responsibility to protect
- Abuse is damaging for children in adult life
- Child abuse thrives in secrecy and silence
- You only have a small piece of the jigsaw
- You don't have decide truth / lies
- Abuser may abuse many others



Referral Process

- Telephone call/Consultation
- Discussion with designated professional
- [Follow up in writing within 48 hours
- Information assessed
- Section 47 (significant harm?) or Section 17(child in need?)
- Escalate the issue to a Senior Manager



GPs....

- Identify children who may have been abused or are at risk of abuse
- Should know when to refer as Child in Need or at risk of significant harm
- Recognise when carer has illness or behaviour which may impact on parenting capacity or pose risk of significant harm to a child



GPs...

- Important role in Child Protection: information sharing, contributing to assessments, Child Protection Plan and case conferences.
- Skills in recognition of abuse
- Ensure that records clearly identify children subject to Child Protection Plan
- Be familiar with local procedures



HILLINGDON
LONDON

Scenario 1

A 12 year old girl attends your surgery and is pregnant. She is accompanied by her mother. She requests a termination

- What would you do?



HILLINGDON
LONDON

Scenario 2

8 month old baby with poor growth, [Second child] and has fallen from 25th to 0.4th centile. Extensive nappy rash and oral thrush. Mother is a known drug addict on reducing programme. First child had poor weight gain in first year. Not up to date with immunisations and not engaging with Health Visitor

- What would you do?



HILLINGDON
LONDON

Scenario 3

3 yr old Jamie's mother brings him in with 'belly ache'. He looks rather withdrawn and seem to have lost some weight. GP notes shows some bruising on the back and arms. On close questioning Mrs Smith admits that things have been difficult at home lately. Her husband, a 36 yr old Barrister, has been drinking more lately and she admits to domestic violence. Though he has not intentionally hit Jamie, a few times Jamie was hit 'as he was getting in the way.' On one occasion, he has allegedly kicked Jamie.

- How do you proceed?



HILLINGDON
LONDON

Scenario 4

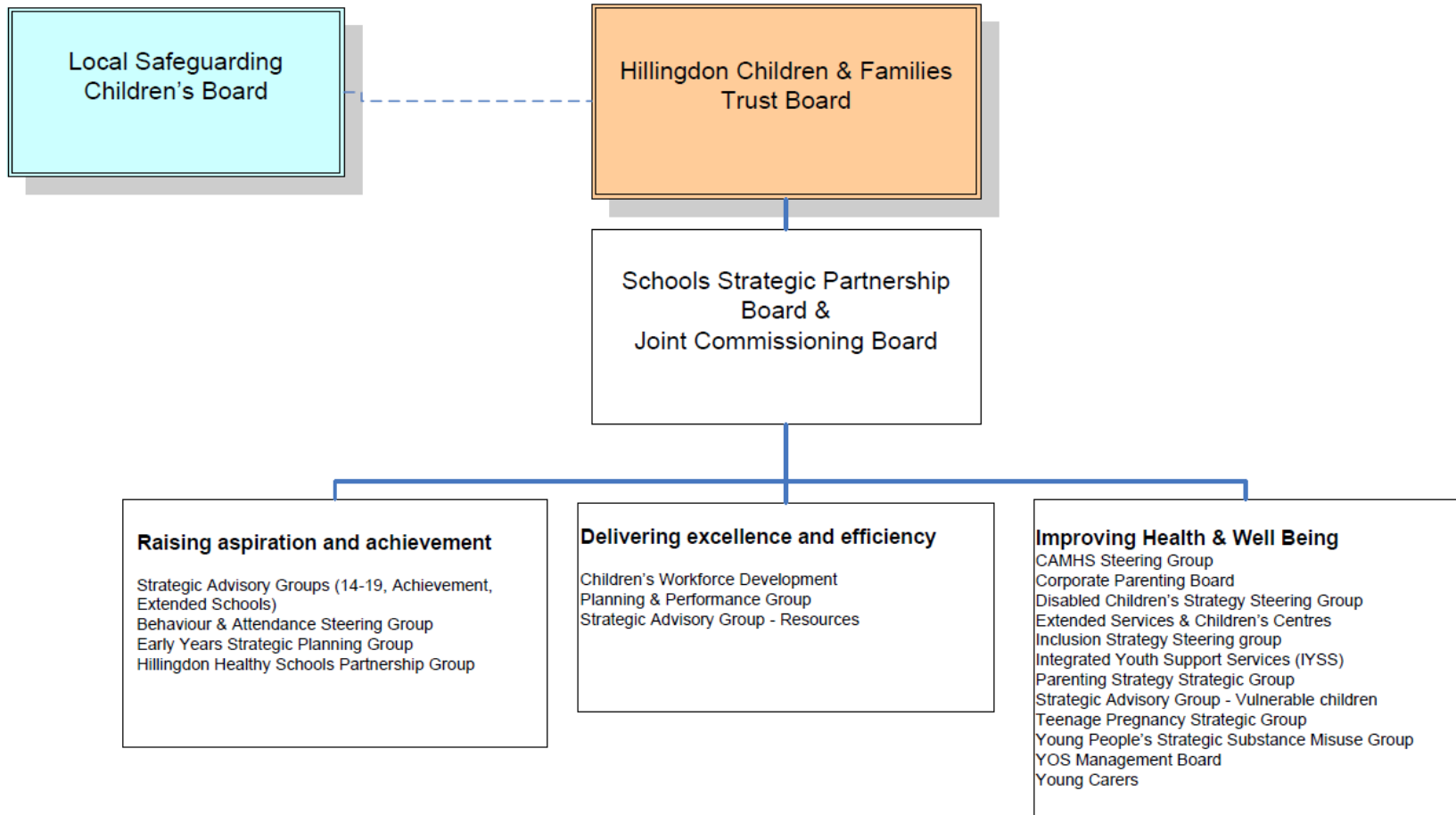
Mrs Dominike, a 30 yr old asylum seeker and a single mother attends with her 2 yrs old son who is 'gone off food'. You examine the child and note evidence of 'beating by a cane'. The mother is afraid too afraid to talk but confesses that the pastor feels that the child is possessed by 'some nasty spirit' and is trying to get rid of it by beating the child. She was warned not to talk about this with 'locals' as they don't understand 'these matters'.

- How do you proceed?



HILLINGDON
LONDON

Children & Families Trust Board Structure



Hillingdon Safeguarding Children Board Members

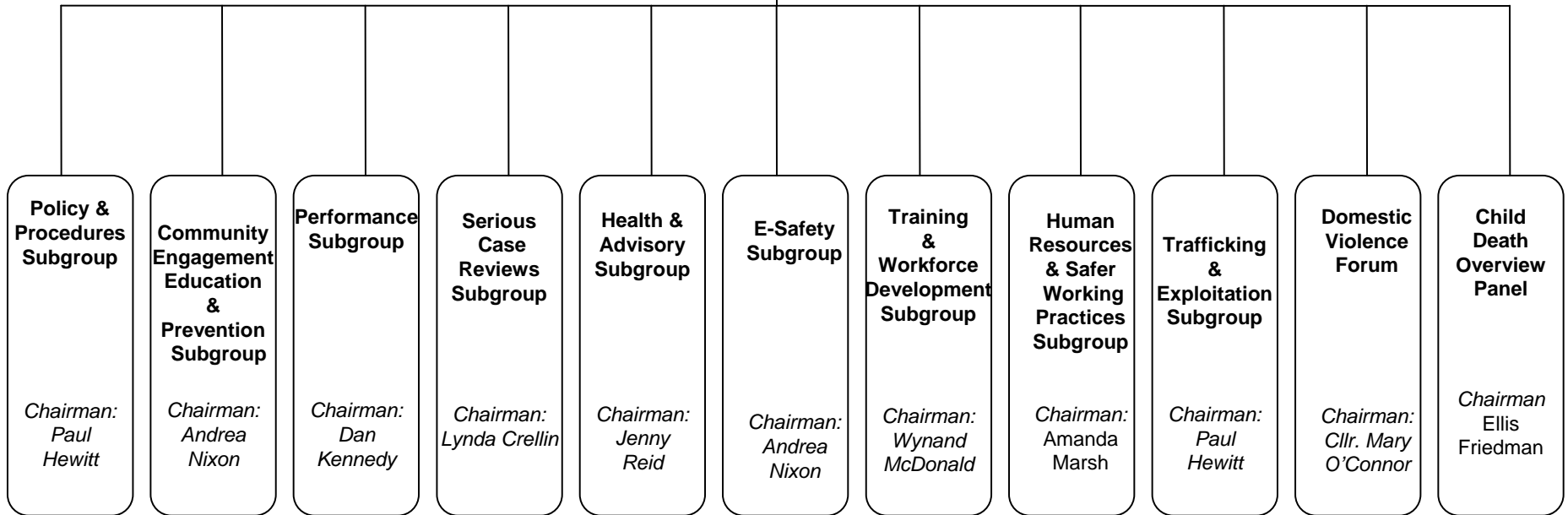
www.hillingdon.gov.uk/lscb

- Education and Schools
- Hillingdon Primary Care Trust [HPCT]
- The Hillingdon Hospital Trust [THHT]
- The Central North West London NHS Foundation Trust [CNWL]
- Adult Social Care & Housing [Hillingdon Council]
- The Youth Offending Service
- The London Probation Service
- The Metropolitan Police [Hillingdon Borough & Child Abuse Investigation team]
- Hillingdon Association of Voluntary Services [HAVS]
- Children and Family Court Advisory and Support Service [CAFCASS]
- Environment & Consumer Protection Services [Hillingdon Licensing Authority]
- UK Border Agency [UKBA]
- Sports & Leisure Services [Hillingdon Council]
- Uxbridge College
- SSAFA [Association for the families of the Armed forces in Hillingdon]
- Group4 Justice services [private sector]



HILLINGDON
LONDON

Hillingdon LSCB
Independent Chairman:
Lynda Crellin



HILLINGDON
LONDON

Local Safeguarding Children Board (LSCB)

- Representation from Health on LSCB and subgroups
- Body of senior professionals representing all agencies involved with children
- Designated and lead staff responsible for child safeguarding
- Child Protection training is mandatory for Health commissioning and provider staff



Referral Numbers and Contacts Childrens Safeguarding.

- Hillingdon Social Care Direct: 01895 250200
- Hillingdon LSCB website www.lscb.hillingdon
- Deputy Director Childrens Services, Merlin Joseph
Mjoseph@Hillingdon.gov.uk 01895250527

LBH safeguarding service managers:

- Parmjit Chahal Pchahal@Hillingdon.gov.uk) 01895277130
- Ann Holmes Aholmes@Hillingdon.gov.uk 01895250742
- Paul Hewitt Phewitt@Hillingdon.gov.uk 01895250410
- Children's Social Care Out of Hours 01895250111

- Independent Chairman of LSCB, Lynda Crellin. lcrellin@hillington.gov.uk
01895277930

- POLICE (Child Abuse Investigation Team) 02082461901



Designated and Named Professionals in Hillingdon Health Organizations

- Ms Jenny Reid (Designated Nurse Safeguarding Children)
01895 452119 / 07958 224288 Jenny.Reid@hillingdon.nhs.uk
- Dr Chelvi Kukendra (Designated Doctor Safeguarding Children)
01895 279845 Chelvi.Kukendra@thh.nhs.uk
- Lisa Crawshaw (named Nurse for Safeguarding Children)
0208 573 2634 / 07956 273655
Lisa.Crawshaw@hillingdon.nhs.uk
- Ms Jane Bennie (Named Nurse Safeguarding Children)
0208 573 2634 / 07984 604171 Jane.Bennie@hillingdon.nhs.uk
- Dr Najib Yusuf (Named Doctor Safeguarding Children)
01895 279370 Najib.Yusuf@thh.nhs.uk
- Dr Helen Neuenschwander (GP Advisor for Safeguarding)
neuensch@doctors.org.uk



What else would you like to know?

A chance to ask your questions



HILLINGDON
LONDON