

JETSET

Jaundice Early Treatment Study in Term babies

Dr Jide Menakaya
21 September 2011

Neonatal jaundice

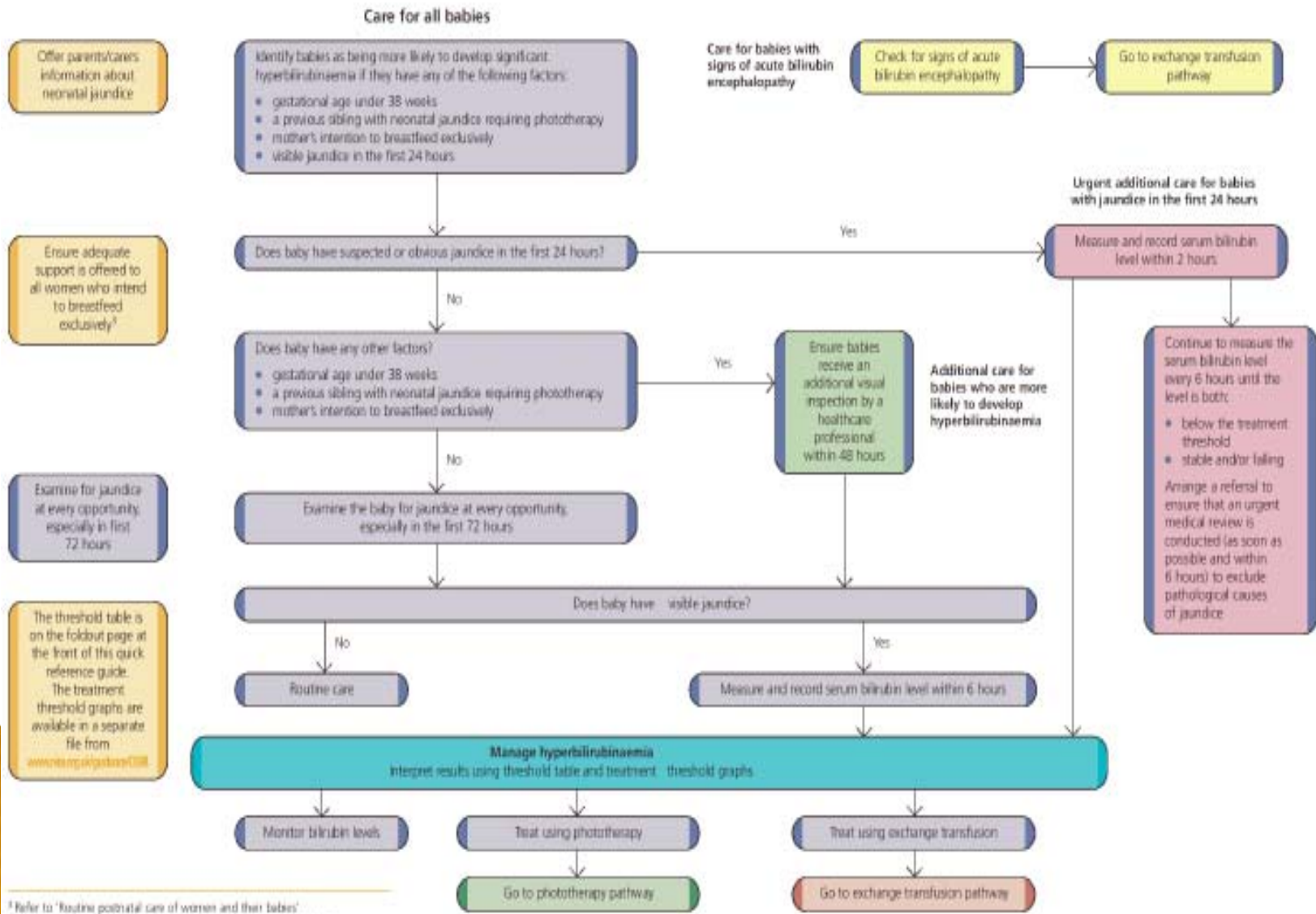
Clinical Guideline

May 2010

Produced to produce guidelines for the NHS by NICE




Investigation pathway



¹ Refer to 'Routine postnatal care of women and their babies' (NICE clinical guideline 37) for information on breastfeeding support.

Key problems

- ▶ Clinical assessment of jaundice.
 - ▶ The lack of feeding support.
 - ▶ Work load on community midwives.
 - ▶ Delays in starting phototherapy.
 - ▶ Delays in effecting prompt discharge.
- 

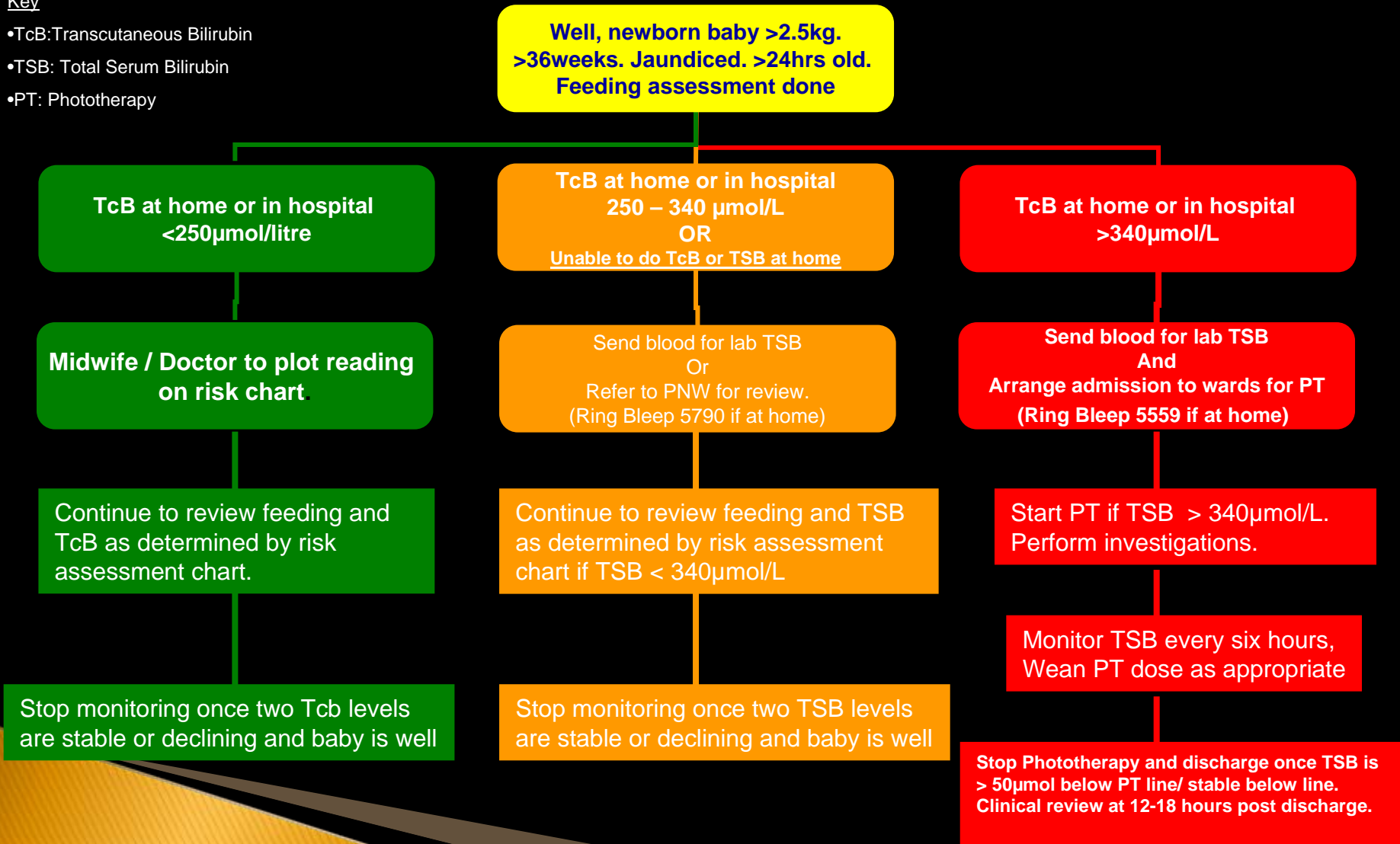
Aims of JETSET

To improve the quality of the care pathway across community and hospital settings for all term new born babies born in Hillingdon who develop jaundice.

JETSET Integrated Care Pathway.

Key

- TcB: Transcutaneous Bilirubin
- TSB: Total Serum Bilirubin
- PT: Phototherapy




JETSET Video



<https://icseclzt.cc.ic.ac.uk/pickup.php?claimID=Gv8JKcZihD5btFyU&claimPasscode=saAMWAXG5sK9Tij&emailAddr=jide.menakaya%40thh.nhs.uk>

JETSET so far June – Aug 2011

- ▶ Similar readmission rate – threshold 340umol/litre.
 - ▶ Reduced severity of jaundice – (353umol/litre)
 - ▶ Reduced delay to treatment – 2 hours wait
 - ▶ Reduced Length of Stay – 30hours
 - ▶ Breast feeding Rates Maintained – 80%
- 

JETSET Team Members

- ▶ Dr Jide Menakaya Consultant Paediatrician Chair
- ▶ Dr Mahendra Mashru General Practitioner Co-Chair
- ▶ Ms Nicole Callender Project Manager
- ▶ Ms Juliette Renaud Matron Maternity Services Member
- ▶ Ms Kelly Kinsella Lactation Midwife Coordinator Member
- ▶ Ms Alison Griffin Neonatal Nurse Member
- ▶ Ms Catherine Jones Paediatric Nurse Member
- ▶ Ms Chris Giles Paediatric Nurse Member
- ▶ **Dr Sarah Davies** **Paediatric Trainee** **Member**
- ▶ Ms Meena Down Community midwife Member
- ▶ Gillie Sidhu Community midwife Member
- ▶ Margaret Talidda Community midwife Member

JETSET

- ▶ Any Questions